

Antifouling Efficacy

Domestic Marine Testing of CeRam-Kote™ AF Marine Coating

A steel panel (right side) was half coated with CeRam-Kote™ AF Marine Coating (left side). The panel was subjected to 90 day continuous submersion in the waters of San Diego Bay from February 22, 2020 until May, 22, 2020. The water was a shallow boat basin extension from the bay, with low tidal flushing action.

Qualitative Results

Description

Sample Pictures

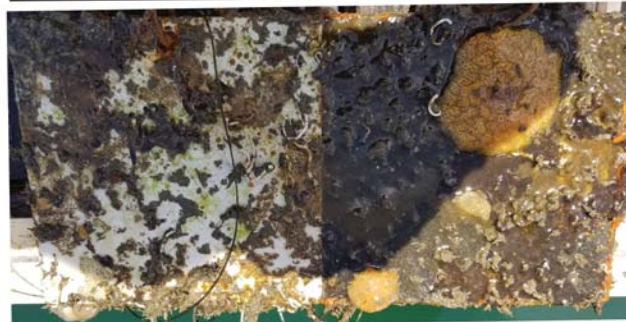
Commentary

Before Immersion



Continuous submersion in shallow boat basin extension from San Diego Bay with low tidal flushing action. Samples suspended at average depth of 18 in.

After 90-days immersion showing marine plant growth



There are no barnacles or other hard marine growth present on test sample, except for a few coral worms not visible

After rinsing with dock hose at residential pressure



The only debris present were marine growth stains and a few coral worms which were easily popped off with plastic putty knife. Standard vessel operation would likely yield enough rinsing action to create similar results on painted hulls.

After light wiping with kitchen sponge



Virtually like new condition. Standard vessel operation would likely yield enough rinsing action to create similar results on painted hulls.